

# MTD Roadmap

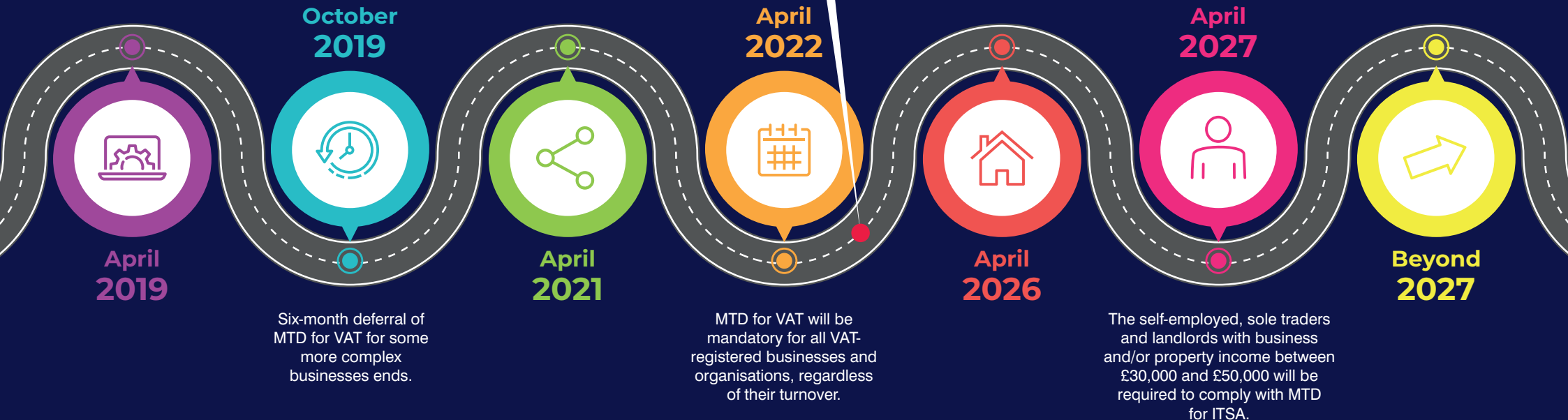
Track your Making Tax Digital (MTD) journey to make sure you are ready and compliant with the changes ahead.

MTD for VAT becomes mandatory for VAT-registered businesses and organisations with taxable turnover above the VAT threshold.

Soft landing period for MTD for VAT ends and businesses must use digital links between all parts of their functional HMRC compatible software.

The self-employed, sole traders and landlords with business and/or property income exceeding £50,000 will be required to comply with MTD for Income Tax Self-Assessment (ITSA).

The Government remains committed to introducing MTD for ITSA to businesses below the £30,000 threshold and general partnerships. It will also eventually expand MTD to Corporation Tax.



To make sure your business stays on the right track on the ever-winding MTD roadmap, please speak to our team today.